

Eames Plastic Chair

Charles & Ray Eames, 1950

vitra.



Eames Plastic Chair

The Eames Plastic Chairs are renewed versions of the legendary Fiberglass Chairs. The original, which was the very first industrially produced plastic chair, was jointly developed with Zenith Plastics for the 'Low-Cost Furniture Design' competition organised by the Museum of Modern Art. In the current version made of polypropylene, these chairs are even more comfortable.

The wide selection of bases makes it possible to use the chairs in a variety of settings: from the dining room or home office to the garden. Shells come in a broad range of colours and upholstery versions, so that components can be mixed and matched to find the perfect chair for individual needs.

In 2015, Vitra adapted the seat geometry and height of the Eames Plastic Chairs to today's requirements and also expanded the selection of colours with six new shades.

The Eames Plastic Armchair is complemented by the Eames Plastic Side Chair without armrests.



Charles & Ray Eames

Charles and Ray Eames are counted among the most important figures of twentieth-century design. Their work spans the fields of furniture design, filmmaking, photography and exhibition design. Vitra is the sole authorised manufacturer of Eames products for Europe and the Middle East.

When you own an Eames product made by Vitra, you know it is an original.

1	Eames Plastic Armchair	10-11	Eames Plastic Chair-Colours	16	Surfaces and colours
2-8	Fields of use	12-13	Eames Plastic Chair-Bases		
9	Cover materials	14-15	Dimensions		



Dining – at home or eating out

With their new seat height, the Eames Plastic Chairs are even better suited for use in combination with contemporary dining tables. At home as well as in restaurants and cafeterias, the many configuration options make it possible to find just the right chair for any furnishing scheme or interior environment.

Materials DAW

- **Base:** wooden base, stained and lacquered in maple. Round steel cross struts in basic dark. (DAW = Dining Height Armchair Wood Base)

Materials DSW

- **Base:** Non-stacking wood base with round steel cross struts, in basic dark. (DSW = Dining Height Side Chair Wood Base)

Materials DAR

- **Base:** wire base with cross struts, chrome-plated or powder-coated finish. The powder-coated version is suitable for outdoor use. (DAR = Dining Height Armchair Rod Base)

Materials DSR

- **Base:** Non-stacking, four-legged wire base with cross struts. The powder-coated version is suitable for outdoor use. (DSR = Dining Height Side Chair Rod Base)

Materials DAX

- **Base:** four-legged, tubular steel base, chrome-plated or powder-coated in basic dark. Powder-coated version suitable for outdoor use. (DAX = Dining Height Armchair X-Base)

Materials DSX

- **Base:** non-stackable four-legged tubular steel base. The powder-coated version is suitable for outdoor use. (DSX = Dining Height Side Chair X-Base)
- **Note:** special additives retard the fading of colours due to UV radiation. However, if the chair is exposed to sunlight for prolonged periods, the colour may change over time. We recommend limited exposure to sunlight.



DAW



DSW



DAR



DSR



DAX



DSX



Outdoor

Versions of the Eames Plastic Chair with non-upholstered seat shells and powder-coated bases are also suited for use in outdoor settings. They not only provide a striking visual accent on terraces and balconies but also make it possible to enjoy the chair's exceptional comfort under the open sky.

Materials DAR

- **Base:** wire base with cross struts, chrome-plated or powder-coated finish. The powder-coated version is suitable for outdoor use. (DAR = Dining Height Armchair Rod Base)

Materials DSR

- **Base:** Non-stacking, four-legged wire base with cross struts. The powder-coated version is suitable for outdoor use. (DSR = Dining Height Side Chair Rod Base)

Materials DAX

- **Base:** four-legged, tubular steel base, chromed or powder-coated in basic dark. Powder-coated version suitable for outdoor use. (DAX = Dining Height Armchair X-Base)

Materials DSX

- **Base:** non-stackable four-legged tubular steel base. The powder-coated version is suitable for outdoor use. (DSX = Dining Height Side Chair X-Base)
- **Note:** special additives retard the fading of colours due to UV radiation. However, if the chair is exposed to sunlight for prolonged periods, the colour may change over time. We recommend limited exposure to sunlight.



DSR



DAR



DSX



DAX



Living

The rocking chair RAR (Rocking Armchair Rod Base) and the elegant DAL (Dining Armchair La Fonda Base) are expressive solitary pieces that cut a fine figure in a wide range of interior environments.

Materials RAR

- **RAR base:** chrome-plated wire base with cross struts, solid maple rockers, stained and lacquered finish. (RAR = Rocking Armchair Rod Base)

Materials DAL

- **Base:** La Fonda base in polished, die-cast aluminium. (DAL = Dining Height Armchair La Fonda Base)



RAR



DAL



Home Office and Studio

The PACC and PSCC versions feature a height-adjustable five-star base on castors with both spring and swivel functions. The chairs offer pleasant comfort in office environments where work tasks require shorter periods of sitting.

Materials PACC

- **Base:** five-star base in polished die-cast aluminium with double castors in basic dark. (PACC = Pivot Armchair Cast Base on Castors)

Materials PSCC

- **Base:** five-star base in polished die-cast aluminium, equipped with double castors in basic dark. (PSCC = Pivot Side Chair Cast Base on Castors)



PACC

PSCC



Multipurpose seating

As flexible seating solutions in auditoriums, conference facilities, media rooms, assembly halls and similar spaces, the Eames Plastic Chairs have proven their worth over decades of use: the models DSS and DSS-N can be numbered and linked in rows, and DSS can also be stacked.

Materials DSS

- **Base:** chrome-plated tubular steel base, DSS with ganging brackets. (DSS = Dining Height Side Chair Stacking Base)
- **Stacking:** stacking of plastic shells on floor or trolley (max. 14 chairs); stacking of upholstered shells on floor (max. 4 chairs) or trolley (max. 10 chairs).

Materials DSS-N

- **Base:** chrome-plated tubular steel base, DSS-N without ganging brackets. (DSS-N = Dining Height Side Chair Stacking Base Non-Link)
- **Stacking:** stacking of plastic shells on floor or trolley (max. 14 chairs); stacking of upholstered shells on floor (max. 4 chairs) or trolley (max. 10 chairs).



DSS-N



DSS and DSS-ganging brackets



Stacking trolley

Stacking trolley

The practical stacking trolley facilitates the quick set-up and storage of chairs used for temporary functions.

**Ganging brackets**

With the ganging brackets, the chairs can be easily hooked together to keep them in their intended place.

**Row and seat numbers**

The models DSS and DSS-N can be labelled with a row number as well as a seat number.





Waiting areas

For the Eames Plastic Chairs, beam supports are available in different lengths for two to five seat shells. Thanks to the robust seat shells and the indestructible base construction, these configurations are suited for all types of waiting areas including those subject to intense use.

Materials Eames Plastic Chair on beam

- **Table unit:** black solid core material (560 x 430 mm).
- **Base:** two-legged base beams in different lengths accommodate 2 to 5 chair shells or table units. T-beam, epoxy-coated in basic dark, polished aluminium legs. Fitted with plastic glides for carpet or anti-slip felt glides for hard floors.



Eames Plastic Side Chair on beam



Eames Plastic Armchair on beam

**Hopsak**100 % polyamide | 550 g/m²

Hopsak is



CARE INSTRUCTIONS

Cover fabrics

To care for cover fabrics, simply Hoover dust and lint regularly using an upholstery nozzle. Stain removal: Fresh stains can usually be removed quickly by wiping immediately with an absorbent, lint-free sponge or cloth. Start from the outer edge of the stain and work towards the centre to avoid creating a halo effect. We recommend using normal household distilled water to prevent limescale residue from building up on dark fabrics after drying. Treatment of stubborn stains: Brush dry stains lightly with a soft brush (such as a clothes brush). Depending on the type of stain, the use of solvents may be necessary. In such cases, it is essential to consult a professional.

Under no circumstances should cover fabric surfaces be rubbed vigorously. Please be sure to consult a specialist before using any solvent-based cleaning product.

Plastics

Vitra plastics are robust and characterised by a high degree of form and colour fastness, which makes them resistant to a variety of chemicals and other media. Furthermore, special additives slow down the colour-fading process. If exposed to direct sunlight for a longer period of time, its colour may change.

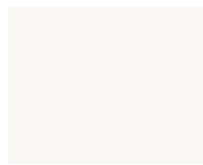
For this reason, we recommend that you avoid exposing your chair to the sun for any longer than is necessary. Please use a soft, damp, non-abrasive cloth for cleaning plastic. Subsequent gentle drying is recommended. Stain removal: For stain removal, we recommend using a mild commercially available cleaner.

Never use abrasive cleaning agents such as powders or pastes, or aggressive «all-purpose cleaners» like alcohol, as these may damage the surface.

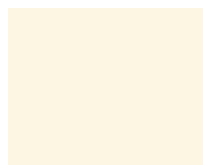


In collaboration with the Dutch designer Hella Jongerius, Vitra has developed a broad palette of colours for seat shells and upholstery materials, allowing an endless number of combinations to suit any interior.

Shell colours



04
white



30
cream



23
ice grey



94
moss grey



73
navy blue



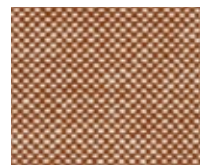
21
ocean



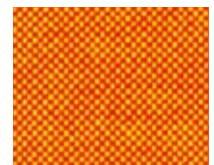
Upholstery colour-suggestions



74
dark blue/ivory



88
cognac/ivory



72
yellow/poppy red



79
warmgrey/ivory



69
grass-green/ivory



81
ice blue/ivory



82
ice blue/moor brown



87
ivory/forest



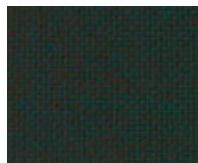
70
grass-green/forest



84
blue/moor brown



83
blue/ivory



73
petrol/moor brown



85
mint/ivory

Shell colours



93
classic green



34
mustard



03
red (poppy red)



28
classic red



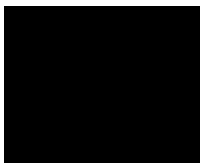
89
oxide red



25
mauve grey



35
basalt



01
basic dark



Upholstery colour-suggestions



86
mint/forest



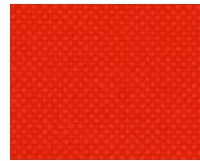
70
grass-green/forest



69
grass-green/ivory



71
yellow/pastel green



65
coral/poppy red



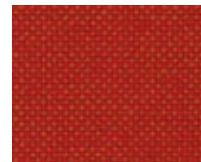
68
pink/poppy red



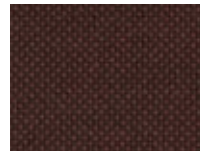
67
poppy red/ivory



63
red/poppy red



96
red/cognac



76
marron/moor brown



62
red/moor brown



80
warmgrey/moor brown



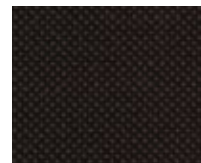
05
dark grey



75
dark blue/moor brown



66
nero



78
nero/moor brown



77
nero/forest



DAR & DSR



DAW & DSW (DSW = Dining Height Side Chair Wood Base)



DAX & DSX

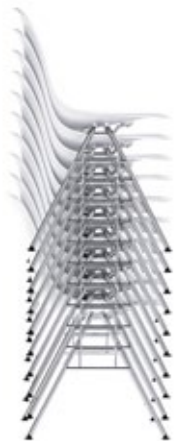


DAL

RAR

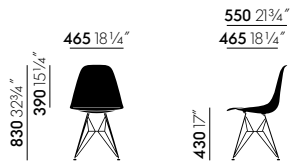


PSCC & PACC

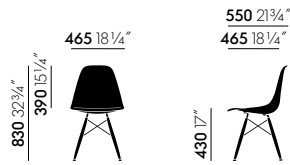


DSS & DSS-N

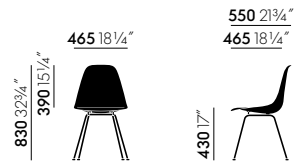
Eames Plastic Chair on beam



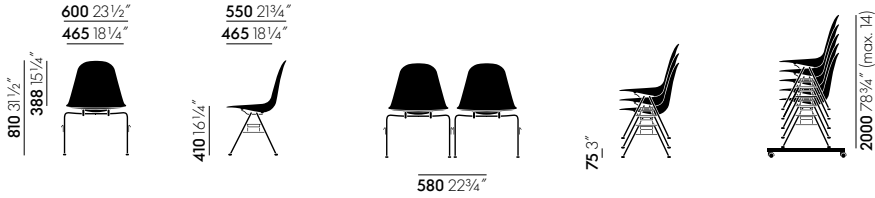
DSR



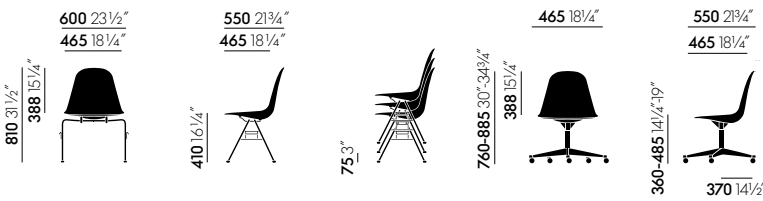
DSW



DSX

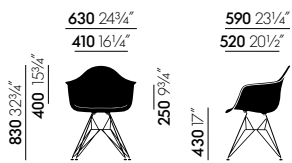


DSS

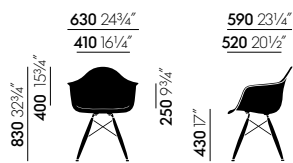


DSS-N

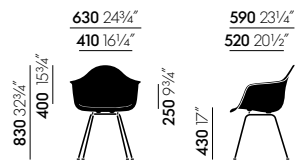
PSCC



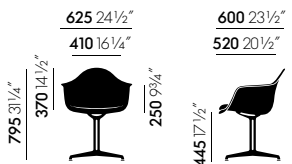
DAR



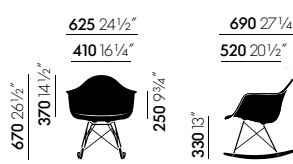
DAW



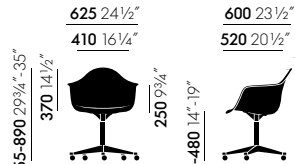
DAX



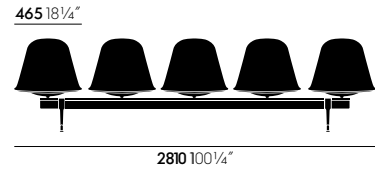
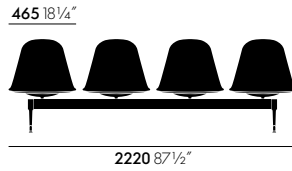
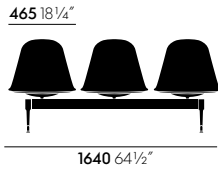
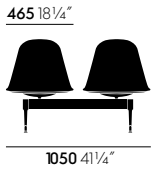
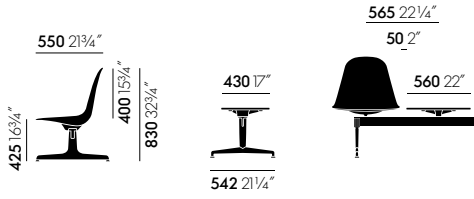
DAL



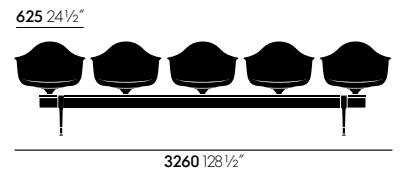
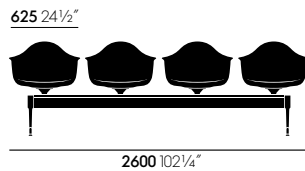
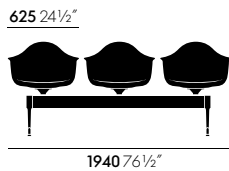
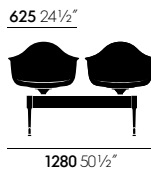
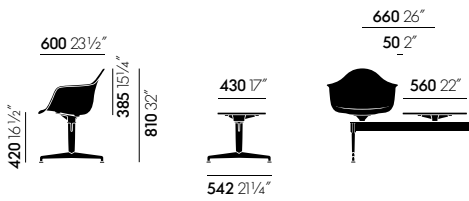
RAR



PACC



Eames Plastic Side Chair on beam



Eames Plastic Armchair on beam

SURFACES AND COLOURS

vitra.



Hopsak

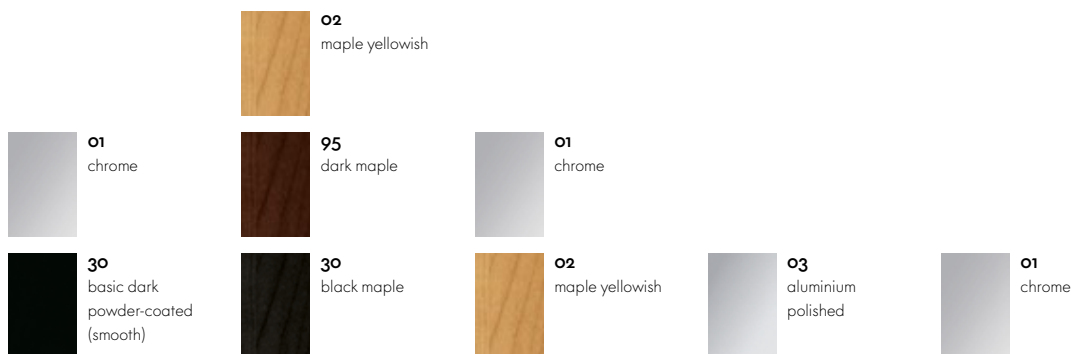


Hopsak

Seat shell

Piping

BASIS



DAR, DAX, DSR, DSX

DAW, DSX

RAR

DAL, PACC, PSCC

DSS, DSS-N

Art. no. 0

Vitra is represented worldwide. Your local Vitra partner can be found at: www.vitra.com.

www.vitra.com/epc

